

**EDI-Recommendations  
of GS1 Germany  
Version 9.3  
Drink**

**Purchase Order  
(ORDERS)**

**EANCOM 2002 Syntax 3**

Introduction.....	2
Business Terms .....	10
Branching Diagram .....	12
Message Structure.....	17
Segmentlayout.....	19
Example .....	48

## Einführung

---

### Introduction

The aim of the brochure on hand is to offer documentation describing the exchange of delivery data between business partners.

The basis of this elaboration is the international standard EANCOM® 2002. The message type ORDERS 011 is used to transmit relevant data. GEFEG.FX (Gefeg mbH, Berlin) was used as the documentation tool.

Please be aware to know that this booklet does not replace the complete specifications in the original chapters or other relevant instructions within the EANCOM® 2002 documentation. Instead, it deals with the description of segments, data elements and codes to be used for a specific task.

The current documentation has been produced by the GS1 Germany GmbH in Cologne. GS1 Germany assumes no liability for any damages incurring from the use of this documentation. This brochure or extracts thereof may only be published or forwarded to third parties with the express written consent of GS1 Germany, which holds copyright on this work.

### Important note

To fulfill the requirements of directive 2003/58/EG, article 4, C058 has been opened in NAD segments identifying a message sender. If the place in the 5 DE 3124 is not sufficient, the following RFF segments can be used, qualified with DE 1153 = GN. DE 1154 has got a capacity of 70 digits. Only in those cases, when no RFF segment follows NAD, a RFF+GN can be used in the heading section of the message. Within the EDI recommendations of GS! Germany this is only applicable for the messages REMADV and SLSFCT.

### This brochure offers different ways to start

#### Introduction

"Introduction" contains a short description of the respective message.

#### BusinessTerms

"Business Terms", is a table which links directly to the sequence numbers of the segments.

#### Diagram

"Diagram", is a hierarchical graphic depiction of all used segments in the same sequence as they are defined in the EANCOM® message. However, every segment is shown only once, and it is therefore possible that the sequence numbering is interrupted.

#### Structure

"Structure", is a list of all used segments in the same sequence as they are defined in the EANCOM® message. In general, for each piece of information one single segment is provided. Exeptions may arrise when the the occurence of a segment is limited and can contain alternative information (e.g., segment BGM).

#### Segmentlayout

"Segmentlayout", an illustration that has been chosen to match the business terms (data from the inhouse application) with the elements from the EANCOM® syntax.

#### Codes

"Codes" contains a list of the codes used in the message.

## Einführung

---

### Examples

"Examples", provides at least one message example with comments. Please note that, for technical reasons, the examples can contain component data element separators, which would otherwise be represented as data element separators in the original messages.

### Print

"Print" opens the PDF documentation for the corresponding message.

## Message structure

### Heading section

Specification of buyer and supplier, message date and number.

### Detail section

Specification of GTIN to identify goods and services, and quantity.

### Summary section

Specification of totals of the message.

## REFERENCES IN THE BEVERAGE SECTOR

### Note: Orders in the Beverage Industry

The message specifies details for goods or services ordered under conditions agreed between the seller and the buyer.

The ORDERS message applies for the following cases:

- Ordering of full trading units for delivery or self pick up
- Ordering of empties for delivery or self pick up

### Examples:

- Ordering of empty crates in case of a surplus of bottles in retail
- Manufacturer orders specific empties from a beverage wholesaler or retailer to relieve a shortage of empties at seasonal peak periods
- Order/ instruction for pickup of empties, e.g. if retail stock of empties has reached peak capacity

## Principles

The receiver of goods determines the product identification, quantity, delivery date/time and delivery location within the order. Supplementary information regarding empties can also be indicated.

Trading partners and locations are identified by their Global Location Numbers (GLN). One order is

## **Einführung**

---

issued for one delivery to one location at one date/time. Traded units are identified only by Global

## **Einführung**

---

Trade Item Numbers (GTIN). The ordered quantity refers to this traded unit. Each line item refers only to one product.

Additional detailed information can be found in chapter "6. ECR in der Getränkewirtschaft" of the ECR-Supply Side manual.

### **REFERENCES IN THE MEDIA SECTOR**

#### **Supply of goods**

The following references are used within the Media sectors to manage the supply of goods:

**Einführung**

		<b>ORDERS</b>		<b>ORDRSP</b>		<b>DESADV</b>		<b>INVOIC</b>
<b>H e a d i n g  S e c t i o n</b>	Order number	<b>BGM DE 1004</b>	⇒	RFF ON	⇒	RFF ON	⇒	RFF ON
	Order number (supplier)	<b>BGM DE 1004</b>	⇒	RFF VN	⇒	RFF VN	⇒	RFF VN
	Customer refer- ence number	RFF CR	⇒	RFF CR	⇒	RFF CR	⇒	RFF CR
	Sellers refer- ence number	RFF SS	⇒	RFF SS	⇒	RFF SS	⇒	RFF SS
	Promotional Deal number	RFF PD	⇒	RFF PD	⇒	RFF PD	⇒	RFF PD
	Purchase order response no.			<b>BGM DE 1004</b>	⇒	RFF POR	⇒	RFF POR
	Despatch advice number					<b>BGM DE 1004</b>	⇒	RFF AAK
	Delivery note number					RFF DQ	⇒	RFF DQ
Sales depart- ment number				⇒	RFF SD	⇒	RFF SD	
<b>D e t a i l  S e c t i o n</b>	Sales depart- ment number	RFF SD		RFF SD	⇒	RFF SD	⇒	RFF SD
	Sellers refer- ence number	<b>RFF SS</b>	⇒	<b>RFF SS</b>	⇒	<b>RFF SS</b>	⇒	<b>RFF SS</b>
	Customer refer- ence number	<b>RFF CR</b>	⇒	<b>RFF CR</b>	⇒	<b>RFF CR</b>	⇒	<b>RFF CR</b>
	Delivery note number					<b>RFF DQ</b>	⇒	<b>RFF DQ</b>
	Promotional Deal number	RFF PD	⇒	RFF PD	⇒	RFF PD	⇒	RFF PD

BGM segments are mandatory. RFF-Segments printed in bold are depending. They must be specified in the detail section as far as a default is not defined in the heading section.

In general the customer reference number (RFF+CR) is depending. If the order is generated by the supplier (agent order, VMI) this reference is replaced by the sellers reference number (RFF+SS). Only one reference number is indicated, either the customer reference number or the sellers reference number.

## Einführung

---

### Appendix: Codelist "Media"

To be used used in conjunction with DE 3035 = 246 and DE 1131 = MEDIA.

#### Lable information (ORDERS), FTX:

AF = Box number  
 BF = User defined freetext  
 BI = Barcode information  
 EA = Lable type  
 HA = Handling information  
 NE = Customer name  
 PT = Price text  
 RN = Number of storage rack

#### Order qualifier (ORDERS, ORDRSP, DESADV), FTX:

	ORDERS	ORDRSP	DESADV
DUN = do not record dues (supply only if immediately available)	x	x	x
DUY = record dues (backorder if not immediately available)	x	x	x
ZRN = central settlement, no	x		
ZRY = central settlement, yes	x		
OWN = do not forward order to publisher	x		
OWY = forward order to publisher	x		
RWN = remittance, no	x		
RWY = remittance, yes	x		
ACN = consignment order, no	x		
ACY = consignment order, yes	x		
PKN = backorder, no (until agreed order volume is reached)	x	x	
PKY = backorder, yes (until agreed order volume is reached)	x	x	
TUN = do not supply replacement article	x	x	
TUY = automatic supply replacement article	x	x	
PWN = batch bonus, no	x		
PWY = batch bonus, yes	x		
FSN = order not forwarded to publisher		x	
FSY = order forwarded to publisher		x	

#### Reasons for return (RETANN, RETINS), CDI:

AC = Over-shipped  
 AG = Delivered too late  
 ALP = Change of fixed retail price  
 AT = Item not ordered  
 DME = Damaged  
 FLG = Wrong delivery  
 VEV = according contract  
 X39 = Goods technical failings (inclusive misprints)

## Einführung

---

**Instruction for returns (RETINS), CDI:**  
TBZ = Send back title page

### **Appendix | Standard Clothes Hanger Return System (SKRS)**

If textiles are to be ordered in conjunction with standard hangers, the required hanger type numbers can be found on the following pages. (Cf. SG 34 in the segment layout).



## Einführung

Standard-Kleiderbügel-Rückführ-System (SKRS) (Stand: 04.05.2004)						
Vorab-Typnummer	Kurzbezeichnung	Bezeichnung	Farbe	Breiten	Bereich	Einsatzmöglichkeiten
40 23330 99001 4	F 1	Mantelbügel	glasklar	42, 45, 50	Stationärer Handel	Sakkos, Mäntel
40 23330 99002 1	S 1	Steg für den Mantelbügel	glasklar		Stationärer Handel	
40 23330 99003 8	F 1/S 1 montiert	Anzugbügel	glasklar	42, 45, 50	Stationärer Handel	Mäntel, Anzüge
40 23330 99004 5	F 2	Jackenbügel	glasklar	32, 38, 44, 49	Stationärer Handel	Kostüme, Sakkos
40 23330 99005 2	FS 3	Universalbügel	glasklar	40, 45	Stationärer Handel	Universal für HAKA, DOB, Sport
40 23330 99006 9	FO 1	Blusenbügel	glasklar	26, 33, 38, 43, 47	Stationärer Handel	Blusen, Nachtwäsche
40 23330 99007 8	F 3	Jackenbügel	schwarz	38, 44, 49	Versandhandel	Kostüme, Sakkos
40 23330 99008 3	S	Steg für Versandhandelsbügel	schwarz		Versandhandel	
40 23330 99009 0	F 3 / S montiert	Jackenbügel (mit Steg)	schwarz	38, 44, 49	Versandhandel	Mäntel, Anzüge
40 23330 99010 6	F 4	Mantelbügel	schwarz	45, 49	Versandhandel	breitgeschnittene Bekleidung
40 23330 99011 3	S 4	Steg für Versandhandelsbügel	schwarz		Versandhandel	Kommt nicht mehr zum Einsatz
40 23330 99012 0	F 4 / S montiert	Mantelbügel (mit Steg)	schwarz	45, 49	Versandhandel	schwere Bekleidung
40 23330 99013 7	FL 2	Rockbügel	schwarz	46	Versandhandel	Röcke, Hosen
40 23330 99014 4	FO 3	Blusenbügel	schwarz	38, 44	Versandhandel	Blusen, Kleider, Kostüme
40 23330 99015 1	HO 2	Hosenbügel	schwarz	41	Versandhandel	Hosen (kurzhängend)
40 23330 99016 8	HO 1	Hosenbügel (offen)	glasklar	38	Stationärer Handel	Hosen (kurzhängend)
40 23330 99017 5	KL 1	Clipbügel	glasklar	22-28, 36-40	Stationärer Handel	Röcke, Hosen
40 23330 99018 2	SP 1	Spannbügel	glasklar		Stationärer Handel	Einsatz zurückgestellt
40 23330 99019 9	F 5	Universalbügel	schwarz	45	Versandhandel	Universal für DOB
40 23330 99020 5	F 5 / S montiert	Universalbügel (mit Steg)	schwarz	45	Versandhandel	Universal für DOB, HAKA
40 23330 99021 2	HO 3	Hosenbügel (geschlossen)	glasklar	41	Stationärer Handel	Hosen (kurzhängend)
40 23330 99022 9	A1	Adapter für Mantelbügel F 1	schwarz		Stationärer Handel	Verlängerung des F1-45 auf 50er Breite
40 23330 99023 6	KB 1	KIKO-Bügel	glasklar	26, 33, 38, 43	Stationärer Handel	Universal für KIKO
40 23330 99024 3	FOA 1	rutschhemmender Adapter für FO 1	transparent		Stationärer Handel	
40 23330 99025 0	FO1 / FOA 1 montiert	Blusenbügel (mit rutschhemmenden Adapter)	glasklar	26, 33, 38, 43, 47	Stationärer Handel	weitausgeschnittene Blusen und T-Shirts

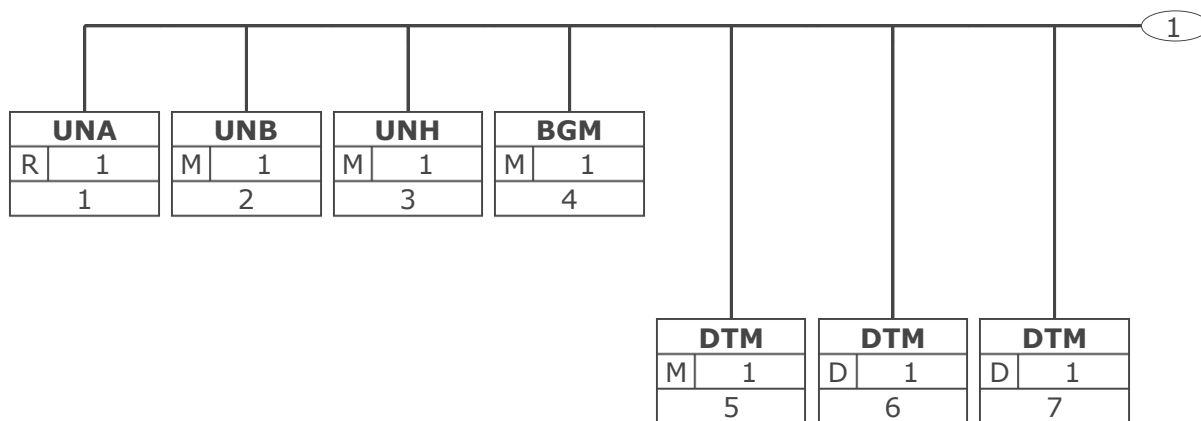
**Business Terms**

<b>Business Term</b>	<b>EANCOM-Segment</b>		<b>Data Element</b>	
	Seg.-No.	Segment SG	DEG	DE
Acknowledgement request	2	UNB		0031
Address for reverse routing	2	UNB	S002	0008
Application reference	2	UNB		0026
Character set	2	UNB	S001	0001
Component data element separator	1	UNA		UNA1
Country of receiver, coded	15	NAD SG2#8		3207
Data element separator	1	UNA		UNA2
Decimal notation	1	UNA		UNA3
Delivery date, earliest	7	DTM	C507	2380
Delivery date, latest	8	DTM	C507	2380
Delivery date, requested	6	DTM	C507	2380
DESADV for empties	24	RFF SG28#3\SG33#3	C506	1154
Document qualification	4	BGM	C002	1000
EANCOM	2	UNB		0032
End of the transmission file, Number of messages or message groups	27	UNZ		0036
File creation date	2	UNB	S004	0017
File creation time	2	UNB	S004	0019
Free text	10	FTX	C108	4440
Free text	23	FTX SG28#3	C108	4440
GLN of the receiver of goods/services	15	NAD SG2#8	C082	3039
GTIN	19	LIN SG28#3	C212	7140
GTIN Pickup of empties and ordering of goods	18	LIN SG28#2	C212	7140
GTIN Pickup of empties without ordering of goods	17	LIN SG28#1	C212	7140
Identification of buyer/invoicee	13	NAD SG2#2	C082	3039
Identification of invoicee	14	NAD SG2#6	C082	3039
Identification of supplier	12	NAD SG2#1	C082	3039
Identification of the receiver of the transmission file	2	UNB	S003	0010
Identification of the sender of the transmission file	2	UNB	S002	0004
Interchange control reference, beginnig	2	UNB		0020
Interchange control reference, end	27	UNZ		0020
Line item number	17	LIN SG28#1		1082
Line item number	18	LIN SG28#2		1082
Line item number	19	LIN SG28#3		1082
Message reference number	3	UNH		0062
Name 1 of the receiver	15	NAD SG2#8	C080	3036
Name 2 of the receiver	15	NAD SG2#8	C080	3036
Name 3 of the receiver	15	NAD SG2#8	C080	3036

**Business Terms**

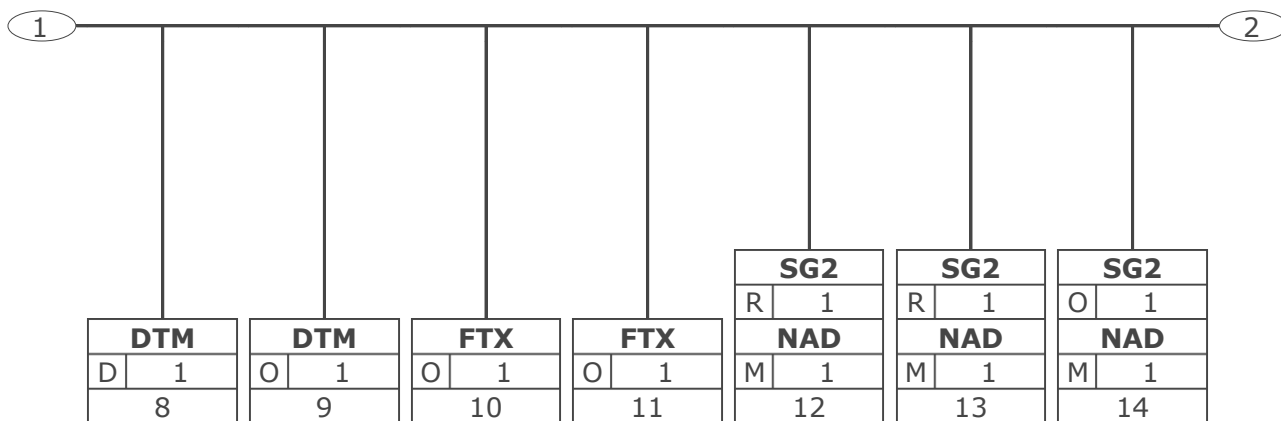
<b>Business Term</b>	<b>EANCOM-Segment</b>		<b>Data Element</b>	
	Seg.-No.	Segment SG	DEG	DE
No empties available	22	QTY SG28#3	C186	6060
Number of segments within a message	26	UNT		0074
Order date (time)	5	DTM	C507	2380
Order number	4	BGM	C106	1004
Password interchange	2	UNB	S005	0022
Pick up place city/town	16	NAD SG2#9		3164
Pick up place identification	16	NAD SG2#9	C082	3039
Pick up place Name 1	16	NAD SG2#9	C080	3036
Pick up place Name 2	16	NAD SG2#9	C080	3036
Pick up place Name 3	16	NAD SG2#9	C080	3036
Pick up place postal code	16	NAD SG2#9		3251
Pick up place street	16	NAD SG2#9	C059	3042
Pick-up date	9	DTM	C507	2380
Place of receiver - name of a city (town, village) for addressing purposes.	15	NAD SG2#8		3164
Postcode of receiver	15	NAD SG2#8		3251
Quantity	21	QTY SG28#3	C186	6060
Reference to subsequent empties-DESADV	11	FTX	C107	4441
Release character	1	UNA		UNA4
Reserved for future use	1	UNA		UNA5
Routing address	2	UNB	S003	0014
Segment terminator	1	UNA		UNA6
Street and number of receiver	15	NAD SG2#8	C059	3042
Syntax version	2	UNB	S001	0002
Test indicator	2	UNB		0035
Type number	20	PIA SG28#3	C212	7140

### Branching Diagram



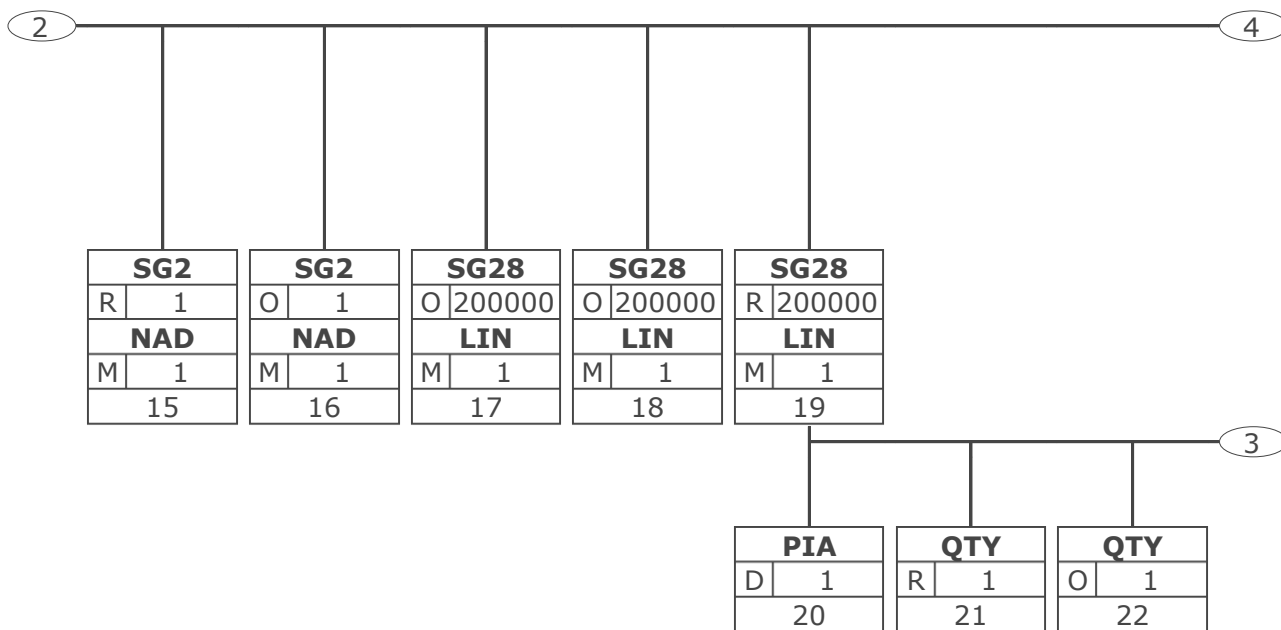
Tag	Tag = Segment/Group Tag
St   MaxOcc	St = Status (M=Mandatory, C=Conditional, R=Required, O=Optional, A=Advised, D=Dependent)
No	MaxOcc = Maximum occurrence of the segment/group; No = Consecutive segment number

### Branching Diagram



Tag	Tag = Segment/Group Tag
St   MaxOcc	St = Status (M=Mandatory, C=Conditional, R=Required, O=Optional, A=Advised, D=Dependent)
No	MaxOcc = Maximum occurrence of the segment/group; No = Consecutive segment number

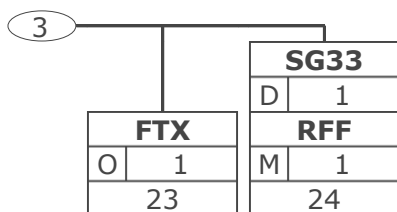
### Branching Diagram



Tag	Tag = Segment/Group Tag
St   MaxOcc	St = Status (M=Mandatory, C=Conditional, R=Required, O=Optional, A=Advised, D=Dependent)
No	MaxOcc = Maximum occurrence of the segment/group; No = Consecutive segment number

### Branching Diagram

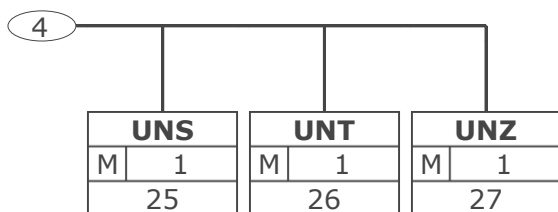
---



Tag	Tag = Segment/Group Tag
St	MaxOcc St = Status (M=Mandatory, C=Conditional, R=Required, O=Optional, A=Advised, D=Dependent)
No	MaxOcc = Maximum occurrence of the segment/group; No = Consecutive segment number

### Branching Diagram

---



Tag	Tag = Segment/Group Tag
St   MaxOcc	St = Status (M=Mandatory, C=Conditional, R=Required, O=Optional, A=Advised, D=Dependent)
No	MaxOcc = Maximum occurrence of the segment/group; No = Consecutive segment number



## Message Structure

Seg.	No.	Status	Max Occ	Segment
UNA	1	R	1	Used character set
UNB	2	M	1	Beginning of transmission file
<b>Heading section</b>				
UNH	3	M	1	Beginn of message
BGM	4	M	1	Beverages ORDERS
DTM	5	M	1	Order date (time)
DTM	6	D	1	Delivery date beverages, requested
DTM	7	D	1	Delivery date beverages, earliest
DTM	8	D	1	Delivery date beverages, latest
DTM	9	O	1	Pick-up date
FTX	10	O	1	Logistical restrictions beverages
FTX	11	O	1	Reference to subsequent empties-DESADV
SG2		R	1	NAD-LOC-FII-SG3-SG5
NAD	12	M	1	Identification of supplier
SG2		R	1	NAD-LOC-FII-SG3-SG5
NAD	13	M	1	Identification of buyer/invoicee
SG2		O	1	NAD-LOC-FII-SG3-SG5
NAD	14	M	1	Identification of invoicee
SG2		R	1	NAD-LOC-FII-SG3-SG5
NAD	15	M	1	GLN of the receiver of goods/services
SG2		O	1	NAD-LOC-FII-SG3-SG5
NAD	16	M	1	Pick up place identification
<b>Detail section pickup of empties without ordering of goods</b>				
SG28		O	200000	LIN-PIA-IMD-MEA-QTY-ALI-DTM-MOA-GIN-QVR-FTX-SG32-SG33-SG34-SG37-SG38-SG39-SG43-SG49
LIN	17	M	1	GTIN Pickup of empties without ordering of goods
<b>Detail section pickup of empties and ordering of goods</b>				
SG28		O	200000	LIN-PIA-IMD-MEA-QTY-ALI-DTM-MOA-GIN-QVR-FTX-SG32-SG33-SG34-SG37-SG38-SG39-SG43-SG49
LIN	18	M	1	GTIN Pickup of empties and ordering of goods
<b>Detail section</b>				
SG28		R	200000	LIN-PIA-IMD-MEA-QTY-ALI-DTM-MOA-GIN-QVR-FTX-SG32-SG33-SG34-SG37-SG38-SG39-SG43-SG49
LIN	19	M	1	GTIN article number
PIA	20	D	1	Type number empties
QTY	21	R	1	Quantity
QTY	22	O	1	No empties
FTX	23	O	1	Pick instruction beverages
SG33		D	1	RFF-DTM
RFF	24	M	1	Following DESADV for empties
<b>Summary section</b>				
UNS	25	M	1	Section control
UNT	26	M	1	End of message

Max. Occ. = Maximum occurrence of the segment/group, Status: M=Mandatory, C=Conditional, R=Required, O=Optional, A=Advised, D=Dependent

**Message Structure**

---

<b>Seg.</b>	<b>No.</b>	<b>Status</b>	<b>Max Occ</b>	<b>Segment</b>
UNZ	27	M	1	End of the transmission file

Max. Occ. = Maximum occurrence of the segment/group, Status: M=Mandatory, C=Conditional, R=Required, O=Optional, A=Advised, D=Dependent

## Segment Layout

No. Seg	St	Max. Occ.			
1		R 1	<b>UNA</b> Service string advice		
To define the characters selected for use as delimiters and indicators in the rest of the interchange that follows.					
Business Term	DE	EDIFACT	Format	St	* Description
Component data element separator	UNA1	Component data element separator	an1	M	Default value: ":"
Data element separator	UNA2	Data element separator	an1	M	Default value: "+"
Decimal notation	UNA3	Decimal notation	an1	M	Default value: "."
Release character	UNA4	Release indicator	an1	M	Default value: "?"
Reserved for future use	UNA5	Reserved for future use	an1	M	(Default value: space )
Segment terminator	UNA6	Segment terminator	an1	M	Default value: "' '
Segmentstatus: Mandatory					
The use of the UNA segment is mandatory, if character set "A" (UNB,DE0001) is not used.					
For international EDI the use of character set UNOA is recommended. For national (German) EDI the use of UNOC is reasonable because it contains lower case letters and umlauts.					
Example: UNA:+.? ' '					
The UNA segment contains the default service string characters.					

Max. Occ. = Maximum Occurrence, St = Status, \* = Restricted Codes  
 Status: M=Mandatory, R=Required, O=Optional, D=Dependent, A=Advised, N=Not used

## Segment Layout

No. Seg	St	Max. Occ.				
2	<b>UNB</b>	M 1	Interchange header To start, identify and specify an interchange.			
Business Term	DE	EDIFACT	Format	St	*	Description
	S001	Syntax identifier		M		
Character set	0001	Syntax identifier	a4	M	*	UNOA UN/ECE level A UNOB UN/ECE level B UNOC UN/ECE level C UNOD UN/ECE level D UNOE UN/ECE level E UNOF UN/ECE level F
Syntax version	0002	Syntax version number	n1	M	*	3 Version 3
	S002	Interchange sender		M		
Indentification of the sender of the transmission file	0004	Sender identification	an..35	M		= Global Location Number (GLN)
	0007	Partner identification code qualifier	an..4	R	*	14 GS1
Address for reverse routing	0008	Address for reverse routing	an..14	O		See note
	S003	Interchange recipient		M		
Indentification of the receiver of the transmission file	0010	Recipient identification	an..35	M		= Global Location Number (GLN)
	0007	Partner identification code qualifier	an..4	R	*	14 GS1
Routing address	0014	Routing address	an..14	O		See note
	S004	Date/time of preparation		M		
File creation date	0017	Date of preparation	n6	M		= Dateformat JJMMTT
File creation time	0019	Time of preparation	n4	M		= Timeformat HHMM
Interchange control reference, beginnig	0020	Interchange control reference	an..14	M		= Unique senders reference
	S005	Recipient's reference, password		O		
Password interchange	0022	Recipient's reference/ password	an..14	M		
	0025	Recipient's reference/ password qualifier	an2	O	*	AA Reference BB Password
Application reference	0026	Application reference	an..14	O		Message type if the transmission fole contains only one message type
	0029	Processing priority code	a1	O	*	A Highest priority
Acknowledgement request	0031	Acknowledgement request	n1	O		
EANCOM	0032	Communications agreement ID	an..35	R		= EANCOM... EDIFACT subset identification (see note)
Test indicator	0035	Test indicator	n1	O	*	1 Interchange is a

Max. Occ. = Maximum Occurrence, St = Status, \* = Restricted Codes  
Status: M=Mandatory, R=Required, O=Optional, D=Dependent, A=Advised, N=Not used

## Segment Layout

Business Term	DE	EDIFACT	Format	St	*	Description
						test
<p>Segmentstatus: Mandatory</p> <p>This segment is used to envelope the interchange, as well as to identify both, the party to whom the interchange is sent and the party who has sent the interchange.</p> <p>For international EDI the use of character set UNOA is recommended. For national (German) EDI the use of UNOC is reasonable because it contains lower case letters and umlauts.</p> <p>Note DE 0008: The address for reverse routing is provided by the interchange sender to inform the interchange recipient of the address within the sender's (source) system to which responding interchanges must be sent. It is recommended that the GLN be used for this purpose.</p> <p>Note DE 0014: The routing address is used to identify the receiver, if a provider adds service values for the actual receiver (e.g. consolidated companies, corporate group). The use of the identification system (e.g. GLN) has to be agreed bilaterally.</p> <p>Note DE 0020: This data element must contain a consistent sequential number per interchange between sender and receiver of the transmission.</p> <p>Note DE 0032: This data element is used to identify any underlying agreements which control the exchange of data. Within EANCOM , the identity of such agreements must start with the letters 'EANCOM', the remaining characters within the data element being filled according to bilateral agreements.</p> <p>Example: UNB+UNOC:3+4012345000009:14:4012345000018+4000004000002:14:4000004000099+181013:1043+4711+REF:AA+++EANCOM+1' The EANCOM file 4711 dated 13.10.2018, 10 h 43 is sent by the issuer identified with GLN 4012345000009 to the receiver identified with GLN 4000004000002.</p>						

Max. Occ. = Maximum Occurrence, St = Status, \* = Restricted Codes  
 Status: M=Mandatory, R=Required, O=Optional, D=Dependent, A=Advised, N=Not used

## Segment Layout

Heading section  
Heading section

No. Seg	St	Max. Occ.				
3	<b>UNH</b>	M 1	Message header To head, identify and specify a message.			
Business Term	DE	EDIFACT	Format	St	*	Description
Message reference number	0062	Message reference number	an..14	M		Sender's unique message reference. Sequence number of messages in the interchange. DE 0062 in UNT will have the same value. Generated by the sender.
	S009	Message identifier		M		
	0065	Message type	an..6	M	*	ORDERS Purchase order message
	0052	Message version number	an..3	M	*	D Draft version/ UN/EDIFACT Directory
	0054	Message release number	an..3	M	*	01B Release 2001 - B
	0051	Controlling agency	an..2	M	*	UN UN/CEFACT
	0057	Association assigned code	an..6	R	*	EAN011 GS1 version control number (GS1 Permanent Code)
Segmentstatus: Mandatory						
This segment is used to head, identify and specify a message.						
Example: UNH+ME0001+ORDERS:D:01B:UN:EAN011'						
The reference number of the ORDERS message is ME0001.						

Max. Occ. = Maximum Occurrence, St = Status, \* = Restricted Codes  
Status: M=Mandatory, R=Required, O=Optional, D=Dependent, A=Advised, N=Not used

## Segment Layout

### Heading section

No. Seg	St	Max. Occ.				
4	<b>BGM</b>	M 1	Beginning of message To indicate the type and function of a message and to transmit the identifying number.			
Business Term	DE	EDIFACT	Format	St	*	Description
	C002	Document/message name		R		
	1001	Document name code	an..3	R	*	220 Order
	1131	Code list identification code	an..17	N		
	3055	Code list responsible agency code	an..3	N		
Document qualification	1000	Document name	an..35	O		
	C106	Document/message identification		R		
Order number	1004	Document identifier	an..35	R		The order number and the GLN of the sender refer to the authorisation-/legitimationnumber, e.g. for involved sub-companies that get the order to pick up the goods.
	1225	Message function code	an..3	R	*	9 Original
Segmentstatus: Mandatory						
This segment is used to indicate the type and function of a message and to transmit the identifying number.						
Notes to DE 1001:						
220 = Order Document/message by means of which a buyer initiates a transaction with a seller involving the supply of goods or services as specified, according to conditions set out in an offer, or otherwise known to the buyer.						
Note to DE 1000:						
This data element can have one of the following contents by bilaterally agreement:						
ORDERDRINK-LKL = ORDERS from supplier to buyer -only empties-						
ORDERDRINK-KLL = ORDERS from buyer to supplier -only pick up of empties-						
ORDERDRINK-KL = ORDERS from buyer to supplier -goods and pick up of empties if applicable-						
Example: BGM+220:::ORDERDRINK-KL+128576+9' The document number is 128576.						

Max. Occ. = Maximum Occurrence, St = Status, \* = Restricted Codes  
Status: M=Mandatory, R=Required, O=Optional, D=Dependent, A=Advised, N=Not used

## Segment Layout

### Heading section

No. Seg	St	Max. Occ.				
5	<b>DTM</b>	M 1	Date/time/period To specify date, and/or time, or period.			
Business Term	DE	EDIFACT	Format	St	*	Description
	C507	Date/time/period		M		
	2005	Date or time or period function code qualifier	an..3	M	*	137 Document/ message date/ time
Order date (time)	2380	Date or time or period value	an..35	R		
	2379	Date or time or period format code	an..3	R		102 CCYYMMDD 203 CCYYMMDDHHMM
Segmentstatus: Mandatory						
This segment is used to specify the date of the order. Identification of the 'Document/message date/time' (code value 137) is mandatory in the purchase order message.						
Example: DTM+137:20181020:102'						
Date of the order confirmation is the 20th of October 2018.						

Max. Occ. = Maximum Occurrence, St = Status, \* = Restricted Codes  
 Status: M=Mandatory, R=Required, O=Optional, D=Dependent, A=Advised, N=Not used



## Segment Layout

### Heading section

No. Seg	St	Max. Occ.				
6	<b>DTM</b>	D 1	Date/time/period To specify date, and/or time, or period.			
Business Term	DE	EDIFACT	Format	St	*	Description
	C507	Date/time/period		M		
	2005	Date or time or period function code qualifier	an..3	M	*	2 Delivery date/ time, requested
Delivery date, requested	2380	Date or time or period value	an..35	R		
	2379	Date or time or period format code	an..3	R		102 CCYYMMDD 203 CCYYMMDDHHMM 718 CCYYMMDD- CCYYMMDD 719 CCYYMMDDHHMM- CCYYMMDDHHMM Format of period to be given in actual message without hyphen.
Segmentstatus: Depending						
The date of delivery must be indicated; either DTM+2 OR DTM+63 and/or DTM+64. This segment is used to specify, where required, requested dates concerning the delivery of goods.						
DE 2005 = 2, Date on which buyer requests goods to be delivered.						
Example: DTM+2:20181028:102' Requested delivery date is the 28th of October 2018.						

Max. Occ. = Maximum Occurrence, St = Status, \* = Restricted Codes  
Status: M=Mandatory, R=Required, O=Optional, D=Dependent, A=Advised, N=Not used

## Segment Layout

### Heading section

No. Seg	St	Max. Occ.				
7	<b>DTM</b>	D 1	Date/time/period To specify date, and/or time, or period.			
Business Term	DE	EDIFACT	Format	St	*	Description
	C507	Date/time/period		M		
	2005	Date or time or period function code qualifier	an..3	M	*	64 Delivery date/ time, earliest
Delivery date, earliest	2380	Date or time or period value	an..35	R		
	2379	Date or time or period format code	an..3	R		102 CCYYMMDD 203 CCYYMMDDHHMM 718 CCYYMMDD- CCYYMMDD 719 CCYYMMDDHHMM- CCYYMMDDHHMM Format of period to be given in actual message without hyphen.
<p>Segmentstatus: Depending The date of delivery must be indicated; either DTM+2 OR DTM+63 and/or DTM+64.</p> <p>This segment is used to specify, where required, requested dates concerning the delivery of goods.</p> <p>Note to DE 2005 = 64: Date identifying a point in time before which the goods shall not be delivered.</p> <p>Example: DTM+64:201810230800:203' The earliest delivery date/time is the 23th of October 2018 at 8.00 a.m.</p>						

Max. Occ. = Maximum Occurrence, St = Status, \* = Restricted Codes  
Status: M=Mandatory, R=Required, O=Optional, D=Dependent, A=Advised, N=Not used

## Segment Layout

### Heading section

No. Seg	St	Max. Occ.				
8	<b>DTM</b>	D 1	Date/time/period To specify date, and/or time, or period.			
Business Term	DE	EDIFACT	Format	St	*	Description
	C507	Date/time/period		M		
	2005	Date or time or period function code qualifier	an..3	M	*	63 Delivery date/ time, latest
Delivery date, latest	2380	Date or time or period value	an..35	R		
	2379	Date or time or period format code	an..3	R		102 CCYYMMDD 203 CCYYMMDDHHMM 718 CCYYMMDD- CCYYMMDD 719 CCYYMMDDHHMM- CCYYMMDDHHMM Format of period to be given in actual message without hyphen.
<p>Segmentstatus: Depending The date of delivery must be indicated; either DTM+2 OR DTM+63 and/or DTM+64.</p> <p>This segment is used to specify, where required, requested dates concerning the delivery of goods.</p> <p>Note to DE 2005 = 63: Date identifying a point of time after which goods shall not or will not be delivered.</p> <p>Example: DTM+63:201810291500:203' The latest delivery date/time is the 29th of October 2018 at 3.00 p.m.</p>						

Max. Occ. = Maximum Occurrence, St = Status, \* = Restricted Codes  
Status: M=Mandatory, R=Required, O=Optional, D=Dependent, A=Advised, N=Not used

## Segment Layout

### Heading section

No. Seg	St	Max. Occ.				
9	<b>DTM</b>	O 1	Date/time/period To specify date, and/or time, or period.			
Business Term	DE	EDIFACT	Format	St	*	Description
	C507	Date/time/period		M		
	2005	Date or time or period function code qualifier	an..3	M	*	200 Pick-up/collection date/time of cargo
Pick-up date	2380	Date or time or period value	an..35	R		
	2379	Date or time or period format code	an..3	R		102 CCYYMMDD 203 CCYYMMDDHHMM
Segmentstatus: Optional						
This segment is used to specify, where required, requested dates concerning the delivery/pick up of goods.						
Note to DE 2005: The use of this codevalue excludes the use of codevalues 63, 64, 69 and 2.						
Example: DTM+200:20181026:102' Pick-up/ collection date of consignment is the 26th of October 2018.						

Max. Occ. = Maximum Occurrence, St = Status, \* = Restricted Codes  
Status: M=Mandatory, R=Required, O=Optional, D=Dependent, A=Advised, N=Not used

## Segment Layout

### Heading section

No. Seg	St	Max. Occ.				
10	<b>FTX</b>	O 1	Free text To provide free form or coded text information.			
Business Term	DE	EDIFACT	Format	St	*	Description
	4451	Text subject code qualifier	an..3	M	*	DEL <b>Delivery information</b>
	4453	Free text function code	an..3	O	*	1 <b>Text for subsequent use</b>
	C107	Text reference		N		
	4441	Free text value code	an..17			
	C108	Text literal		R		
<b>Free text</b>	4440	Free text value	an..51	M		
	4440	Free text value	an..51	O		
	4440	Free text value	an..51	O		
	4440	Free text value	an..51	O		
	4440	Free text value	an..51	O		
	3453	Language name code	an..3	D		ISO 639 2-Alpha Code
Segmentstatus: Optional						
This segment can be used to advise information about the access route (hight of doorway).						
Example: FTX+DEL+1+++FREIER TEXT:FREE TEXT:FREIER TEXT:FREE TEXT:FREIER TEXT+DE ' Possibility to transmit free text						

Max. Occ. = Maximum Occurrence, St = Status, \* = Restricted Codes

Status: M=Mandatory, R=Required, O=Optional, D=Dependent, A=Advised, N=Not used

## Segment Layout

### Heading section

No. Seg	St	Max. Occ.				
11	<b>FTX</b>	O 1	Free text To provide free form or coded text information.			
Business Term	DE	EDIFACT	Format	St	*	Description
	4451	Text subject code qualifier	an..3	M	*	DEL <b>Delivery information</b>
	4453	Free text function code	an..3	O	*	1 <b>Text for subsequent use</b>
	C107	Text reference		D		
<b>Reference to subsequent empties-DESADV</b>	4441	Free text value code	an..17	R	*	DESADV <b>DESADV (fix value)</b>
	1131	Code list identification code	an..17	N		
	3055	Code list responsible agency code	an..3	R	*	246 <b>GS1 Germany</b>
<p>Segmentstatus: Optional</p> <p>This segment can be used to advise a DESADV message specifying empties, when this document number is not yet known.</p> <p>This segment is only used in connection with GTIN 4000001012626 or 4012345002003.</p> <p>Example: <b>FTX+DEL+1+DESADV : :246'</b> Advise of empties-DESADV</p>						

Max. Occ. = Maximum Occurrence, St = Status, \* = Restricted Codes  
Status: M=Mandatory, R=Required, O=Optional, D=Dependent, A=Advised, N=Not used

## Segment Layout

### Heading section

No. Seg	St	Max. Occ.				
12	<b>SG2</b>	R 1	NAD-LOC-FII-SG3-SG5			
	<b>NAD</b>	M 1	Name and address			
To specify the name/address and their related function, either by C082 only and/or unstructured by C058 or structured by C080 thru 3207.						
Business Term	DE	EDIFACT	Format	St	*	Description
	3035	Party function code qualifier	an..3	M	*	SU <b>Supplier</b>
	C082	Party identification details		A		
<b>Identification of supplier</b>	3039	Party identifier	an..35	M		Global Location Number (GLN) - Format n13
	1131	Code list identification code	an..17	N		
	3055	Code list responsible agency code	an..3	R	*	9 <b>GS1</b>
	C058	Name and address		O		This composite may only be used to fulfill the requirements of directive 2003/58/EG, article 4. If applicable the message sender gets the possibility to give the relevant statements at this place. If C058 ist not sufficient, more declaration can be given in following RFF+GN... segments.
	3124	Name and address description	an..35	M		
	3124	Name and address description	an..35	O		
	3124	Name and address description	an..35	O		
	3124	Name and address description	an..35	O		
	3124	Name and address description	an..35	O		
Segmentstatus: Mandatory						
Within EANCOM it is mandatory to identify the supplier/manufacturer by Global Location Number (GLN).						
Example: NAD+SU+4012345000009::9+X:X:X:X'						
The supplier/manufacturer is identified by Global Location Number (GLN) 4012345000009.						

Max. Occ. = Maximum Occurrence, St = Status, \* = Restricted Codes  
 Status: M=Mandatory, R=Required, O=Optional, D=Dependent, A=Advised, N=Not used

## Segment Layout

### Heading section

No. Seg	St	Max. Occ.				
13	<b>SG2</b>	R 1	NAD-LOC-FII-SG3-SG5			
	<b>NAD</b>	M 1	Name and address			
To specify the name/address and their related function, either by C082 only and/or unstructured by C058 or structured by C080 thru 3207.						
Business Term	DE	EDIFACT	Format	St	*	Description
	3035	Party function code qualifier	an..3	M	*	BY Buyer
	C082	Party identification details		A		
Identification of buyer/ invoicee	3039	Party identifier	an..35	M		Global Location Number (GLN) - Format n13
	1131	Code list identification code	an..17	N		
	3055	Code list responsible agency code	an..3	R	*	9 GS1
	C058	Name and address		O		This composite may only be used to fulfill the requirements of directive 2003/58/EG, article 4. If applicable the message sender gets the possibility to give the relevant statements at this place. If C058 ist not sufficient, more declaration can be given in following RFF+GN... segments.
	3124	Name and address description	an..35	M		
	3124	Name and address description	an..35	O		
	3124	Name and address description	an..35	O		
	3124	Name and address description	an..35	O		
	3124	Name and address description	an..35	O		
Segmentstatus: Mandatory						
Within EANCOM it is mandatory to identify the buyer/invoicee by Global Location Number (GLN).						
Example: NAD+BY+4398765000004::9+X:X:X:X:X'						
The order is generated by a buyer with the Global Location Number (GLN) 4398765000004.						

Max. Occ. = Maximum Occurrence, St = Status, \* = Restricted Codes

Status: M=Mandatory, R=Required, O=Optional, D=Dependent, A=Advised, N=Not used



## Segment Layout

### Heading section

No. Seg	St	Max. Occ.				
14	<b>SG2</b>	O 1	NAD-LOC-FII-SG3-SG5			
	<b>NAD</b>	M 1	Name and address			
To specify the name/address and their related function, either by C082 only and/or unstructured by C058 or structured by C080 thru 3207.						
Business Term	DE	EDIFACT	Format	St	*	Description
	3035	Party function code qualifier	an..3	M	*	IV Invoicee
	C082	Party identification details		R		
Identification of invoicee	3039	Party identifier	an..35	M		Global Location Number (GLN) - Format n13
	1131	Code list identification code	an..17	N		
	3055	Code list responsible agency code	an..3	R	*	9 GS1
Segmentstatus: Optional						
Within EANCOM it is mandatory to identify the invoicee by Global Location Number (GLN). This specification is only necessary, if the buyer differs from the invoicee.						
Example: <b>NAD+IV+4012345000009::9'</b> The invoicee is identified by Global Location Number (GLN) 4012345000009.						

Max. Occ. = Maximum Occurrence, St = Status, \* = Restricted Codes  
Status: M=Mandatory, R=Required, O=Optional, D=Dependent, A=Advised, N=Not used

## Segment Layout

### Heading section

No. Seg	St	Max. Occ.				
15	<b>SG2</b>	R 1	NAD-LOC-FII-SG3-SG5			
	<b>NAD</b>	M 1	Name and address			
To specify the name/address and their related function, either by C082 only and/or unstructured by C058 or structured by C080 thru 3207.						
Business Term	DE	EDIFACT	Format	St	*	Description
	3035	Party function code qualifier	an..3	M	*	DP Delivery party
	C082	Party identification details		D		
GLN of the receiver of goods/services	3039	Party identifier	an..35	M		Global Location Number (GLN) - Format n13
	1131	Code list identification code	an..17	N		
	3055	Code list responsible agency code	an..3	R	*	9 GS1
	C058	Name and address		N		
	3124	Name and address description	an..35			
	C080	Party name		D		
Name 1 of the receiver	3036	Party name	an..35	M		
Name 2 of the receiver	3036	Party name	an..35	D		
Name 3 of the receiver	3036	Party name	an..35	D		
	C059	Street		D		
Street and number of receiver	3042	Street and number or post office box identifier	an..35	M		
Place of receiver - name of a city (town, village) for addressing purposes.	3164	City name	an..35	D		
	C819	Country sub-entity details		D		
	3229	Country sub-entity name code	an..9	O		Identification of the name of sub-entities (state, province) defined by appropriate governmental agencies
Postcode of receiver	3251	Postal identification code	an..17	D		
Country of receiver, coded	3207	Country name code	an..3	D		
Segmentstatus: Mandatory						
This NAD segment always identifies the first delivery place.						
The NAD segment is used to specify names, address and function of a partner, either only by data element group C082 and/or in structure form by data element group C080 to 3707.						
Use of GLN, the specification of the Global Location Number is sufficient.						

Max. Occ. = Maximum Occurrence, St = Status, \* = Restricted Codes  
 Status: M=Mandatory, R=Required, O=Optional, D=Dependent, A=Advised, N=Not used

## Segment Layout

---

### Heading section

For receivers, who do not have GLN, the address is indicated as clear text. The group C082 remains empty in this case.

Example: NAD+DP+4399899175941::9++EDI-LAND:Herr Laufen:Garage+Bussardweg 5+Leopardshöhle++3818+DE'

The receiver is identified by Global Location Number (GLN) 4399899175941. An address in clear text is only allowed in exceptional cases.

## Segment Layout

### Heading section

No. Seg	St	Max. Occ.				
16	<b>SG2</b>	O 1	NAD-LOC-FII-SG3-SG5			
	<b>NAD</b>	M 1	Name and address			
To specify the name/address and their related function, either by C082 only and/or unstructured by C058 or structured by C080 thru 3207.						
Business Term	DE	EDIFACT	Format	St	*	Description
	3035	Party function code qualifier	an..3	M	*	PW <b>Despatch party</b>
	C082	Party identification details		D		
<b>Pick up place identification</b>	3039	Party identifier	an..35	M		Global Location Number (GLN) - Format n13
	1131	Code list identification code	an..17	N		
	3055	Code list responsible agency code	an..3	R	*	9 <b>GS1</b>
	C058	Name and address		N		
	3124	Name and address description	an..35			
	C080	Party name		D		
<b>Pick up place Name 1</b>	3036	Party name	an..35	M		
<b>Pick up place Name 2</b>	3036	Party name	an..35	D		
<b>Pick up place Name 3</b>	3036	Party name	an..35	D		
	C059	Street		D		
<b>Pick up place street</b>	3042	Street and number or post office box identifier	an..35	M		
<b>Pick up place city/town</b>	3164	City name	an..35	D		
	C819	Country sub-entity details		D		
	3229	Country sub-entity name code	an..9	O		
<b>Pick up place postal code</b>	3251	Postal identification code	an..17	D		
	3207	Country name code	an..3	D		ISO 3166 two alpha code
Segmentstatus: Optional						
The existence of this segment indicates the pick up of goods by a third party.						
The collection place is identified by Global Location Number (GLN). Party name and address in clear text may only be used, if a Global Location Number (GLN) is not (yet) available.						
Example: NAD+PW+4089876511113::9++Abholstelle-Name 1:Abholstelle-Name 2:Abholstelle-Name 3+ Maarweg 104+Köln++50825+DE'						
The collection place is identified by Global Location Number (GLN) 4089876511111.						

Max. Occ. = Maximum Occurrence, St = Status, \* = Restricted Codes  
 Status: M=Mandatory, R=Required, O=Optional, D=Dependent, A=Advised, N=Not used

## Segment Layout

### Detail section

No. Seg	St	Max. Occ.				
17	<b>SG28</b>	O 200000	LIN-PIA-IMD-MEA-QTY-ALI-DTM-MOA-GIN-QVR-FTX-SG32-SG33-SG34-SG37-SG38-SG39-SG43-SG49			
	<b>LIN</b>	M 1	Line item To identify a line item and configuration.			
Business Term	DE	EDIFACT	Format	St	*	Description
Line item number	1082	Line item identifier	an..6	R		Application generated line item number
	1229	Action request/ notification description code	an..3	N		
	C212	Item number identification		D		
GTIN Pickup of empties without ordering of goods	7140	Item identifier	an..35	R		GTIN, Format n..14
	7143	Item type identification code	an..3	R	*	SRV <b>GS1 Global Trade Item Number</b>
Segmentstatus: Optional						
This LIN-segment is only used to assign the pickup of empties without ordering of goods.						
To enable this functionality GS1 Germany allocated the GTIN 4000001012626. If used, this LIN segment is the one and only segment of the detail section. The specification of empties is done in a subsequent DESADV message, which has been announced by use of the FXT segment in the heading section.						
Example: <code>LIN+1++4000001012626:SRV'</code> Ordering pickup of empties without ordering of goods.						

Max. Occ. = Maximum Occurrence, St = Status, \* = Restricted Codes  
Status: M=Mandatory, R=Required, O=Optional, D=Dependent, A=Advised, N=Not used

## Segment Layout

### Detail section

No. Seg	St	Max. Occ.				
18			<b>SG28</b>	O	200000	LIN-PIA-IMD-MEA-QTY-ALI-DTM-MOA-GIN-QVR-FTX-SG32-SG33-SG34-SG37-SG38-SG39-SG43-SG49
			<b>LIN</b>	M	1	Line item To identify a line item and configuration.
Business Term	DE	EDIFACT	Format	St	*	Description
Line item number	1082	Line item identifier	an..6	R		Application generated line item number
	1229	Action request/ notification description code	an..3	N		
	C212	Item number identification		D		
GTIN Pickup of empties and ordering of goods	7140	Item identifier	an..35	R		GTIN, Format n..14
	7143	Item type identification code	an..3	R	*	SRV <b>GS1 Global Trade Item Number</b>
Segmentstatus: Optional						
This LIN-segment is used to assign the pickup of empties within a message that is used to order beverages or empties.						
To enable this functionality GS1 Germany allocated the GTIN 4012345002003.						
If empties shall be specified this is done in a subsequent DESADV message, which has been announced by use of the FXT segment in the heading section.						
To announce that no empties are available for pickup, the line item contains a QTY segment with DE 6063 = 1 and DE 6060 = 0.						
Example: LIN+2++4012345002003:SRV' Ordering pickup of empties together with ordering of goods.						

Max. Occ. = Maximum Occurrence, St = Status, \* = Restricted Codes  
Status: M=Mandatory, R=Required, O=Optional, D=Dependent, A=Advised, N=Not used

## Segment Layout

### Detail section

No. Seg	St	Max. Occ.				
19	<b>SG28</b>	R 200000	LIN-PIA-IMD-MEA-QTY-ALI-DTM-MOA-GIN-QVR-FTX-SG32-SG33-SG34-SG37-SG38-SG39-SG43-SG49			
	<b>LIN</b>	M 1	Line item To identify a line item and configuration.			
Business Term	DE	EDIFACT	Format	St	*	Description
Line item number	1082	Line item identifier	an..6	R		Application generated line item number
	1229	Action request/ notification description code	an..3	N		
	C212	Item number identification		D		
GTIN	7140	Item identifier	an..35	R		GTIN, Format n..14
	7143	Item type identification code	an..3	R	*	SRV <b>GS1 Global Trade Item Number</b>
Segmentstatus: Mandatory						
The LIN-segment is used to specify the item being ordered.						
In this segment the GTIN is indicated as item identification.						
The detail section always starts with the LIN-segment.						
Example: LIN+3++4000004000033:SRV'						
The ordered item with the item number 3 is identified by GTIN 4000004000035.						

Max. Occ. = Maximum Occurrence, St = Status, \* = Restricted Codes  
 Status: M=Mandatory, R=Required, O=Optional, D=Dependent, A=Advised, N=Not used

## Segment Layout

### Detail section

No. Seg	St	Max. Occ.				
<b>SG28</b>	R	200000	LIN-PIA-IMD-MEA-QTY-ALI-DTM-MOA-GIN-QVR-FTX-SG32-SG33-SG34-SG37-SG38-SG39-SG43-SG49			
20			<b>PIA</b>	D	1	Additional product id To specify additional or substitutional item identification codes.
Business Term	DE	EDIFACT	Format	St	*	Description
	4347	Product identifier code qualifier	an..3	M	*	5 <b>Product identification</b>
	C212	Item number identification		M		
<b>Type number</b>	7140	Item identifier	an..35	R		
	7143	Item type identification code	an..3	R	*	MN <b>Model number</b>
	1131	Code list identification code	an..17	N		
	3055	Code list responsible agency code	an..3	R	*	246 <b>GS1 Germany</b>
Segmentstatus: Depending						
This segment is only used, if LIN segment does not provide a GTIN and the ordering of empties is identified by type numbers. Then it must follow the LIN segment immediately. In this case LIN segment (mandatory) only provides the line item number.						
Example: PIA+5+4023330100079:MN::246'						
Only if LIN does not provide a GTIN: Identification of empties in PIA						

Max. Occ. = Maximum Occurrence, St = Status, \* = Restricted Codes  
Status: M=Mandatory, R=Required, O=Optional, D=Dependent, A=Advised, N=Not used



## Segment Layout

### Detail section

No. Seg	St	Max. Occ.				
21			<b>SG28</b>	R	200000	LIN-PIA-IMD-MEA-QTY-ALI-DTM-MOA-GIN-QVR-FTX-SG32-SG33-SG34-SG37-SG38-SG39-SG43-SG49
			<b>QTY</b>	R	1	Quantity To specify a pertinent quantity.
Business Term	DE	EDIFACT	Format	St	*	Description
	C186	Quantity details		M		
	6063	Quantity type code qualifier	an..3	M	*	21 <b>Ordered quantity</b>
<b>Quantity</b>	6060	Quantity	an..35	M		Note: Use only numeric values.
	6411	Measurement unit code	an..3	D		KGM kilogram LTR litre MTR metre All code values from EANCOM code list 6411 and UN/ECE Recommendation 20 code list available.
Segmentstatus: Mandatory						
The QTY segment is used to specify the order quantity for the current order item, which was identified in the LIN segment.						
DE 6411 is only used, if the article is a variable quantity article. Default value is piece.						
Example: QTY+21:20' The ordered quantity amounts to 20 pieces of the article no. described in the LIN segment. (GTIN).						

Max. Occ. = Maximum Occurrence, St = Status, \* = Restricted Codes  
Status: M=Mandatory, R=Required, O=Optional, D=Dependent, A=Advised, N=Not used

## Segment Layout

### Detail section

No. Seg	St	Max. Occ.				
22	R	200000	LIN-PIA-IMD-MEA-QTY-ALI-DTM-MOA-GIN-QVR-FTX-SG32-SG33-SG34-SG37-SG38-SG39-SG43-SG49			
	O	1	Quantity To specify a pertinent quantity.			
Business Term		DE	EDIFACT	Format	St	* Description
		C186	Quantity details		M	
		6063	Quantity type code qualifier	an..3	M	* 1 Discrete quantity
No empties available		6060	Quantity	an..35	M	Use only numeric values.
Segmentstatus: Optional						
This QTY segment is used to indicate that no empties are available for pickup when goods are delivered.						
This segment is only used in conjunction with GTIN 4012345002003. The use of the FTX segment at heading section to announce a DESADV is not allowed in this case. DE 6060 must have value zero.						
Example: QTY+1:0' No empties are available for pickup when goods are delivered next time.						

Max. Occ. = Maximum Occurrence, St = Status, \* = Restricted Codes  
 Status: M=Mandatory, R=Required, O=Optional, D=Dependent, A=Advised, N=Not used

## Segment Layout

### Detail section

No. Seg	St	Max. Occ.				
<b>SG28</b>	R	200000	LIN-PIA-IMD-MEA-QTY-ALI-DTM-MOA-GIN-QVR-FTX-SG32-SG33-SG34-SG37-SG38-SG39-SG43-SG49			
23			<b>FTX</b>	O	1	Free text To provide free form or coded text information.
Business Term	DE	EDIFACT	Format	St	*	Description
	4451	Text subject code qualifier	an..3	M		LOI Loading instruction
	4453	Free text function code	an..3	O	*	1 Text for subsequent use
	C107	Text reference		N		
	4441	Free text value code	an..17			
	C108	Text literal		R		
Free text	4440	Free text value	an..51	M		
	4440	Free text value	an..51	O		
	4440	Free text value	an..51	O		
	4440	Free text value	an..51	O		
	4440	Free text value	an..51	O		
	3453	Language name code	an..3	D		ISO 639 2-Alpha Code
Segmentstatus: Optional						
This segment can be used to advise pick instruction (e.g. pillar stacking).						
Example: FTX+LOI+1++FREIER TEXT:FREE TEXT:FREIER TEXT:FREE TEXT:FREIER TEXT+DE'						
Possibility to transmit free text						

Max. Occ. = Maximum Occurrence, St = Status, \* = Restricted Codes  
 Status: M=Mandatory, R=Required, O=Optional, D=Dependent, A=Advised, N=Not used

## Segment Layout

### Detail section

No. Seg	St	Max. Occ.				
<b>SG28</b>	R	200000	LIN-PIA-IMD-MEA-QTY-ALI-DTM-MOA-GIN-QVR-FTX-SG32-SG33-SG34-SG37-SG38-SG39-SG43-SG49			
<b>SG33</b>	D	1	RFF-DTM			
24 <b>RFF</b>	M	1	Reference			
To specify a reference.						
Business Term	DE	EDIFACT	Format	St	*	Description
	C506	Reference		M		
	1153	Reference code qualifier	an..3	M	*	AAK <b>Despatch advice number</b>
<b>DESADV for empties</b>	1154	Reference identifier	an..70	R		
Segmentstatus: Depending						
This segmentgroup will only be used if a subsequent DESADV for empties is advised.						
Example: <b>RFF+AAK:4711'</b>						
The message references to DESADV 4711.						

Max. Occ. = Maximum Occurrence, St = Status, \* = Restricted Codes  
 Status: M=Mandatory, R=Required, O=Optional, D=Dependent, A=Advised, N=Not used

## Segment Layout

Summary section

Summary section

No.	Seg	St	Max.	Occ.		
25	<b>UNS</b>	M	1		Section control To separate header, detail and summary sections of a message.	
Notes:						
1. To be used by message designers when required to avoid ambiguities. Mandatory only if specified for the type of message concerned.						
Business Term	DE	EDIFACT	Format	St	*	Description
	0081	Section identification	a1	M	*	S Detail/summary section separation
Segmentstatus: Mandatory						
This segment is used to separate the detail and summary section of the message.						
The UNS segment has only a syntactic function						
Example: UNS+S'						
Separation between detail and summary section						

Max. Occ. = Maximum Occurrence, St = Status, \* = Restricted Codes

Status: M=Mandatory, R=Required, O=Optional, D=Dependent, A=Advised, N=Not used

## Segment Layout

Summen-Teil  
End of the message

No. Seg	St	Max. Occ.				
26	<b>UNT</b>	M 1	Message trailer To end and check the completeness of a message.			
Business Term	DE	EDIFACT	Format	St	*	Description
Number of segments within a message	0074	Number of segments in the message	n..6	M		
	0062	Message reference number	an..14	M		The reference number from the UNH segment must be repeated here Same contents as DE 0062 in the UNH segment
Segmentstatus: Mandatory						
This segment is a mandatory UN/EDIFACT segment. It must always be the last segment in the message.						
Example: UNT+182+ME0001' Number of segments in the message.						

Max. Occ. = Maximum Occurrence, St = Status, \* = Restricted Codes  
Status: M=Mandatory, R=Required, O=Optional, D=Dependent, A=Advised, N=Not used

## Segment Layout

No. Seg	St	Max. Occ.				
27	<b>UNZ</b>	M 1	Interchange trailer To end and check the completeness of an interchange.			
Business Term	DE	EDIFACT	Format	St	*	Description
End of the transmission file, Number of messages or message groups	0036	Interchange control count	n..6	M		Number of messages or message groups in the transmission file.
Interchange control reference, end	0020	Interchange control reference	an..14	M		Interchange control reference, identical with UNB DE 0020.
Segmentstatus: Mandatory						
The UNZ segment is the last segment of the transmission file.						
Note DE 0036: If functional groups are not used, this is the number of messages within the interchange.						
Example: UNZ+1+4711' The transmission file contains 1 message.						

Max. Occ. = Maximum Occurrence, St = Status, \* = Restricted Codes  
Status: M=Mandatory, R=Required, O=Optional, D=Dependent, A=Advised, N=Not used

**Example****UNA:+.?'**

The UNA segment contains the default service string characters.

**UNB+UNOC:3+4012345000009:14:4012345000018+4000004000002:14:4000004000099+181013:1043+4711+REF:AA++++EANCOM+1'**

The EANCOM file 4711 dated 13.10.2018, 10 h 43 is sent by the issuer identified with GLN 4012345000009 to the receiver identified with GLN 4000004000002.

**UNH+ME0001+ORDERS:D:01B:UN:EAN011'**

The reference number of the ORDERS message is ME0001.

**BGM+220:::ORDERDRINK-KL+128576+9'**

The document number is 128576.

**DTM+137:20181020:102'**

Date of the order confirmation is the 20th of October 2018.

**DTM+2:20181028:102'**

Requested delivery date is the 28th of October 2018.

**DTM+64:201810230800:203'**

The earliest delivery date/time is the 23th of October 2018 at 8.00 a.m.

**DTM+63:201810291500:203'**

The latest delivery date/time is the 29th of October 2018 at 3.00 p.m.

**DTM+200:20181026:102'**

Pick-up/ collection date of consignment is the 26th of October 2018.

**FTX+DEL+1++FREIER TEXT:FREE TEXT:FREIER TEXT:FREE TEXT:FREIER TEXT+DE'**

Possibility to transmit free text

**FTX+DEL+1+DESADV::246'**

Advise of empties-DESADV

**NAD+SU+4012345000009::9+X:X:X:X:X'**

The supplier/manufacturer is identified by Global Location Number (GLN) 4012345000009.

**NAD+BY+4398765000004::9+X:X:X:X:X'**

The order is generated by a buyer with the Global Location Number (GLN) 4398765000004.

**NAD+IV+4012345000009::9'**

The invoicee is identified by Global Location Number (GLN) 4012345000009.

**NAD+DP+4399899175941::9++EDI-LAND:Herr Laufen:Garage+Bussardweg 5+Leopardshöhle++33818+DE'**

The receiver is identified by Global Location Number (GLN) 4399899175941. An address in clear text is only allowed in exceptional cases.

**NAD+PW+4089876511113::9++Abholstelle-Name 1:Abholstelle-Name 2:Abholstelle-Name 3+Maarweg 104+Köln++50825+DE'**

The collection place is identified by Global Location Number (GLN) 4089876511111.

**LIN+1++4000001012626:SRV'**

Ordering pickup of empties without ordering of goods.

**LIN+2++4012345002003:SRV'**

Ordering pickup of empties together with ordering of goods.

**LIN+3++4000004000033:SRV'**

The ordered item with the item number 3 is identified by GTIN 4000004000035.



**Example**

---

**PIA+5+4023330100079:MN::246'**

Only if LIN does not provide a GTIN: Identification of empties in PIA

---

**QTY+21:20'**

The ordered quantity amounts to 20 pieces of the article no. described in the LIN segment. (GTIN).

---

**QTY+1:0'**

No empties are available for pickup when goods are delivered next time.

---

**FTX+LOI+1++FREIER TEXT:FREE TEXT:FREIER TEXT:FREE TEXT:FREIER TEXT+DE'**

Possibility to transmit free text

---

**RFF+AAK:4711'**

The message references to DESADV 4711.

---

**UNS+S'**

Separation between detail and summary section

---

**UNT+182+ME0001'**

Number of segments in the message.

---

**UNZ+1+4711'**

The transmission file contains 1 message.

---